

# 8 Reasons to Buy the CS 8100 Evo Edition

EVO EDITION FEATURING  
Tomosharp technology • Enhanced image processing

## 1 A New Level of Sharpness

Thanks to new Tomosharp algorithms, advanced image processing and technologies, the CS 8100 delivers images with impressive sharpness and contrast.



The unit provides sharp images with more detail and the learning curve is minimal. Simply put, capturing a panoramic image has never been easier.

**Dr. Bartley Labiner, D.D.S.**

## 2 Precise Laser-free Positioning

Face-to-face positioning, innovative head support and increased thickness of the focal trough make patient positioning easy and accurate—without laser beams.

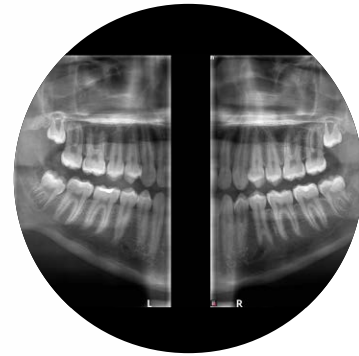


It's a very quick machine. Positioning the patient to take the scan is extremely easy and straight forward.

**Dr. M. Noam Green, D.M.D.**

## 3 Outstanding Value

Delivering the best value for money without compromising image quality, the CS 8100 provides exactly what practitioners need to make accurate real-time diagnosis.



My patients see the system and love its sleek, futuristic look. But to me, clearly, the user interface is the best feature.

**Dr. M. Noam Green**

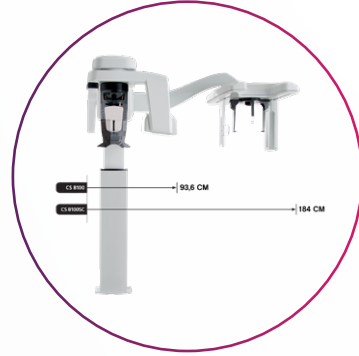
## 4 Award-winning Design

The CS 8100 family has already received more than 15 international prizes, recognizing this best-selling unit for its user-friendly and compact design.



## 5 Fits into Any Practice

The ultra-compact size of both the CS 8100 and the CS 8100SC means the units can easily fit into tight spaces with minimal remodeling.



The CS 8100 is so compact that it utilizes the small space I have in my office. No remodeling was necessary because of the unit's slender design.

**Dr. Bartley Labiner, D.D.S.**

## 6 One-person Installation

Thanks to its compact size and smart packaging, the unit can be installed by one person in just 20 minutes. An industry first!



## 7 From Cephalometric Image to Tracing in Record Time

Ultra-fast scans—as low as 3 seconds—reduce the risk of motion blur while true automatic tracing allows you to fully trace images in just 10 seconds.



I trust more the automatic tracing than tracing with the human eye.

**Dr. Sonnenberg, D.M.D.**

## 8 Powered by CS Imaging Version 8

Our latest imaging software connects all Carestream Dental imaging and CAD/CAM technologies into one single platform—the first step to an effective digital workflow.



CS Imaging version 8 covers my whole workflow. With one program, I can display everything I need.

**Dr. Jose Antonio Benito Aguilar, D.D.S.**

Learn more at [carestreamdental.com](http://carestreamdental.com)